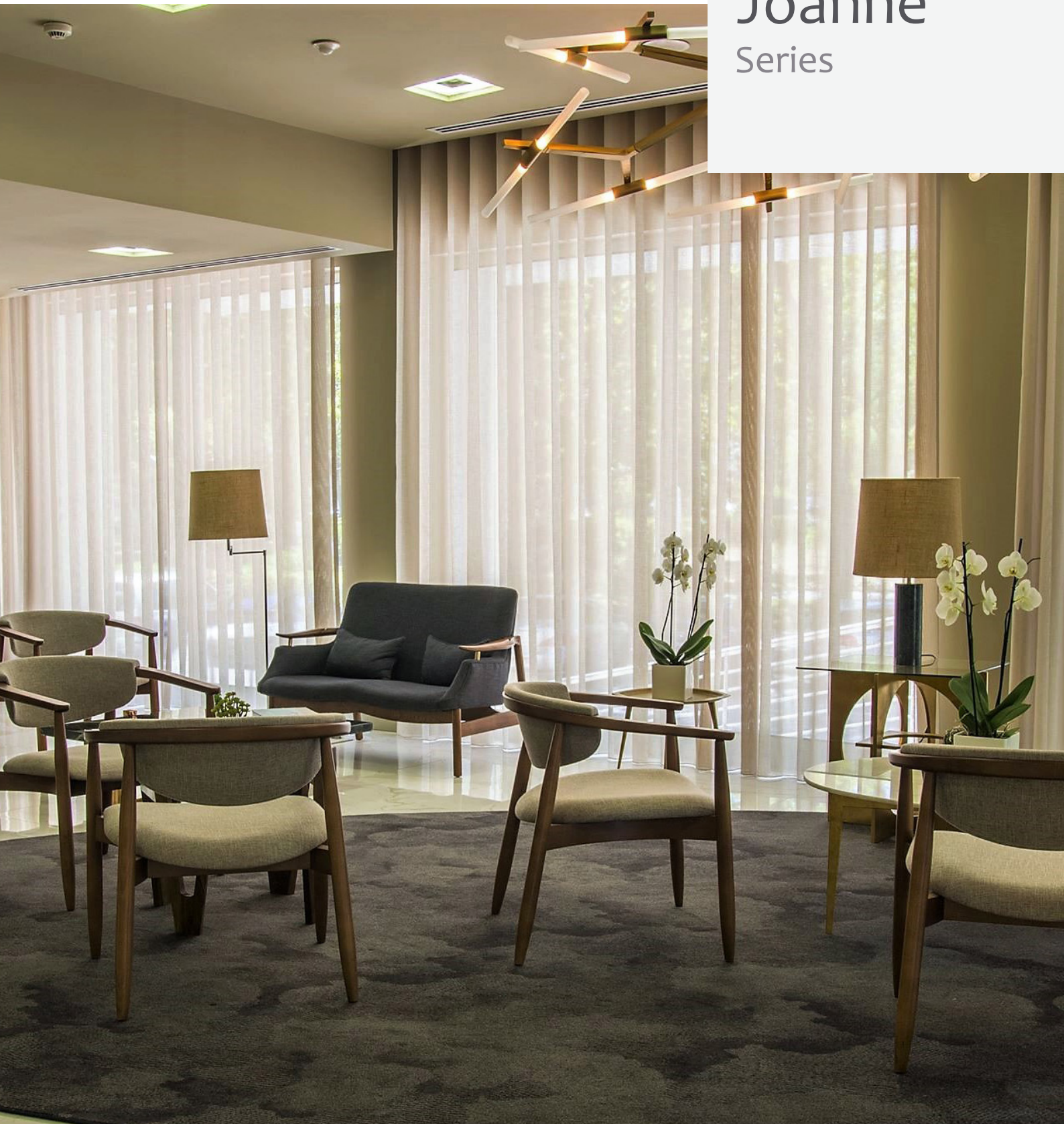


# ATAMA

F u r n i t u r e

## Joanne

Series



## Joanne M950

The Joanne is an elegant side chair option manufactured in Portugal featuring a curvature design emphasizing the raw beauty of European Beech timber with its exposed frame and bent timber backrest.

Perfectly suited across a diverse range of interior spaces including hotel lobby and sitting areas, hospitality spaces and waiting areas as well as dining areas within the aged care and retirement sector.



## Options

Models Available:

M950UU - Upholstered Backrest (Pictured Top)

M950UW - Bentwood Backrest (Pictured Bottom)

Non-Stacking, Stacking models also available.

Extensive range of standard stains & finishes available.

Upholstered to specification.

PEFC Certified.



## Dimensions

<b>Height</b>	780 mm	<b>Seat Height</b>	460 mm
<b>Width</b>	540 mm	<b>Seat Width</b>	480 mm
<b>Depth</b>	530 mm	<b>Seat Depth</b>	380 mm

### Joanne M950E

The Joanne is an elegant side chair option manufactured in Portugal featuring a curvature design emphasizing the raw beauty of European Beech timber with its exposed frame and bent timber backrest.

Perfectly suited across a diverse range of interior spaces including hotel lobby and sitting areas, hospitality spaces and waiting areas as well as dining areas within the aged care and retirement sector.



### Options

Models Available:

M950EUU - Upholstered Backrest (Pictured Top)

M950EUW - Bentwood Backrest (Pictured Bottom)

Stacking, Non-Stacking models also available.

Extensive range of standard stains & finishes available.

Upholstered to specification.

PEFC Certified.



### Dimensions

<b>Height</b>	780 mm	<b>Seat Height</b>	460 mm
<b>Width</b>	540 mm	<b>Seat Width</b>	480 mm
<b>Depth</b>	530 mm	<b>Seat Depth</b>	380 mm

## Joanne M950C

The Joanne is an elegant armchair option manufactured in Portugal featuring a curvature design emphasizing the raw beauty of European Beech timber with its exposed frame and bent timber backrest.

Perfectly suited across a diverse range of interior spaces including hotel lobby and sitting areas, hospitality spaces and waiting areas as well as dining areas within the aged care and retirement sector.

## Options

Models Available:

M950CUU - Upholstered Backrest (Pictured Top)

M950CUW - Bentwood Backrest (Pictured Bottom)

Non-Stacking, Stacking models also available.

Extensive range of standard stains & finishes available.

Upholstered to specification.

PEFC Certified.



## Dimensions

**Height** 780 mm  
**Width** 610 mm  
**Depth** 540 mm

**Seat Height** 460 mm  
**Seat Width** 500 mm  
**Seat Depth** 380 mm

**Arm Height** 630 mm



## Joanne M950CE

The Joanne is an elegant armchair option manufactured in Portugal featuring a curvature design emphasizing the raw beauty of European Beech timber with its exposed frame and bent timber backrest.

Perfectly suited across a diverse range of interior spaces including hotel lobby and sitting areas, hospitality spaces and waiting areas as well as dining areas within the aged care and retirement sector.

## Options

Models Available:

M950CEUU - Upholstered Backrest (Pictured Top)

M950CEUW - Bentwood Backrest (Pictured Bottom)

Stacking, Non-Stacking models also available.

Extensive range of standard stains & finishes available.

Upholstered to specification.

PEFC Certified.



## Dimensions

<b>Height</b>	780 mm	<b>Seat Height</b>	460 mm	<b>Arm Height</b>	630 mm
<b>Width</b>	610 mm	<b>Seat Width</b>	500 mm		
<b>Depth</b>	540 mm	<b>Seat Depth</b>	380 mm		

## Joanne M953

The Joanne is an elegant lounge chair option manufactured in Portugal featuring a curvature design emphasizing the raw beauty of European Beech timber with its exposed frame and bent timber backrest.

Perfectly suited across a diverse range of interior spaces including hotel lobby and sitting areas, hospitality spaces and waiting areas as well as dining areas within the aged care and retirement sector.

## Options

Models Available:

M953UU - Upholstered Backrest (Pictured Top)

M953UW - Bentwood Backrest (Pictured Bottom)

Non-Stacking.

Extensive range of standard stains & finishes available.

Upholstered to specification.

PEFC Certified.



## Dimensions

<b>Height</b>	730 mm	<b>Seat Height</b>	430 mm	<b>Arm Height</b>	610 mm
<b>Width</b>	670 mm	<b>Seat Width</b>	550 mm		
<b>Depth</b>	600 mm	<b>Seat Depth</b>	440 mm		



## Joanne M958

The Joanne is an elegant bar stool option manufactured in Portugal featuring a curvature design emphasizing the raw beauty of European Beech timber with its exposed frame and bent timber backrest.

Perfectly suited across a diverse range of interior spaces including hotel lobby and sitting areas, hospitality spaces and waiting areas as well as dining areas within the aged care and retirement sector.

## Options

Models Available:

M958UU - Upholstered Backrest (Pictured Top)

M958UW - Bentwood Backrest (Pictured Bottom)

Stacking, Non-Stacking models also available.

Extensive range of standard stains & finishes available.

Upholstered to specification.

PEFC Certified.



## Dimensions

<b>Height</b>	780 mm	<b>Seat Height</b>	460 mm	<b>Arm Height</b>	630 mm
<b>Width</b>	610 mm	<b>Seat Width</b>	500 mm		
<b>Depth</b>	540 mm	<b>Seat Depth</b>	380 mm		



## Joanne M954

The Joanne is an elegant side chair option manufactured in Portugal featuring a curvature design emphasizing the raw beauty of European Beech timber with its exposed frame and soft padded backrest that rolls past the frame for added comfort.

Perfectly suited across a diverse range of interior spaces including hotel lobby and sitting areas, hospitality spaces and waiting areas as well as dining areas within the aged care and retirement sector.

## Options

Models Available:

M954 - Non-Stacking (Pictured Top)

M954E - Stacking (Pictured Bottom)

Extensive range of standard stains & finishes available.

Upholstered to specification.

PEFC Certified.



## Dimensions

<b>Height</b>	750 mm	<b>Seat Height</b>	460 mm
<b>Width</b>	540 mm	<b>Seat Width</b>	480 mm
<b>Depth</b>	530 mm	<b>Seat Depth</b>	400 mm





## Joanne M954C

The Joanne is an elegant arm chair option manufactured in Portugal featuring a curvature design emphasizing the raw beauty of European Beech timber with its exposed frame and soft padded backrest that rolls past the frame for added comfort.

Perfectly suited across a diverse range of interior spaces including hotel lobby and sitting areas, hospitality spaces and waiting areas as well as dining areas within the aged care and retirement sector.

## Options

Models Available:

M954C - Non-Stacking (Pictured Top)

M954CE - Stacking (Pictured Bottom)

Extensive range of standard stains & finishes available.

Upholstered to specification.

PEFC Certified.



## Dimensions

**Height** 750 mm  
**Width** 610 mm  
**Depth** 540 mm

**Seat Height** 460 mm  
**Seat Width** 500 mm  
**Seat Depth** 400 mm

**Arm Height** 630 mm



## Joanne M959

The Joanne is an elegant barstool option manufactured in Portugal featuring a curvature design emphasizing the raw beauty of European Beech timber with its exposed frame and soft padded backrest that rolls past the frame for added comfort.

Perfectly suited across a diverse range of interior spaces including hotel lobby and sitting areas, hospitality spaces and waiting areas as well as dining areas within the aged care and retirement sector.



## Options

Extensive range of standard stains & finishes available.

Upholstered to specification.

PEFC Certified.



## Dimensions

<b>Height</b>	1020 mm	<b>Seat Height</b>	780 mm
<b>Width</b>	520 mm	<b>Seat Width</b>	450 mm
<b>Depth</b>	540 mm	<b>Seat Depth</b>	350 mm